



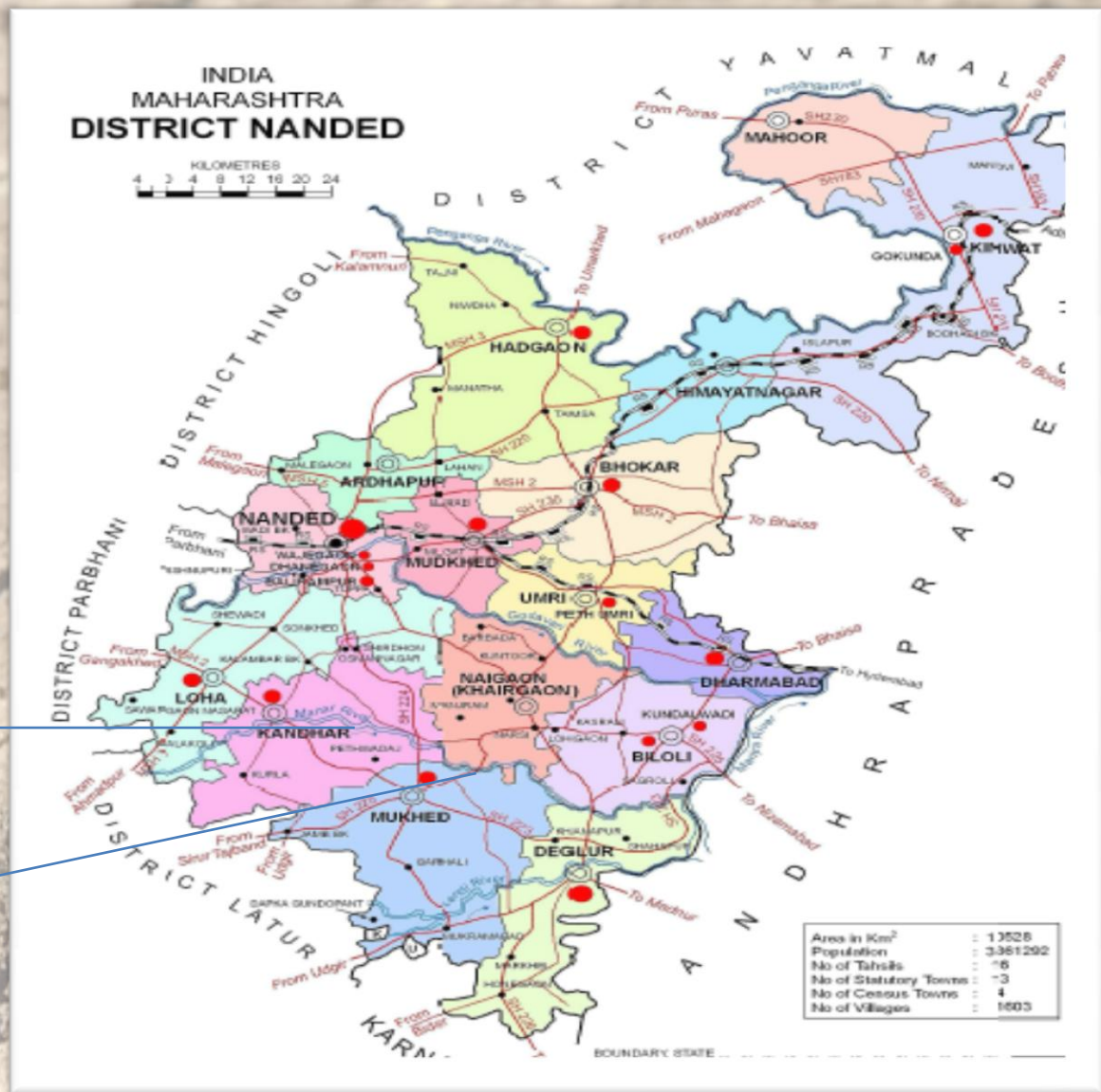
**Taluka –Naigaon**  
**District-Nanded**



## Village Ratoli is in the Nanded District, Maharashtra

## Manyad River

## Ratoli





# Agenda

- **Transact walk**
- **Time Line**
- **Resource map**
- **Social map**
- **Seasonality analysis**
- **Ranking**
- **VENN Diagram**

# Ratoli Census Figures, 2011

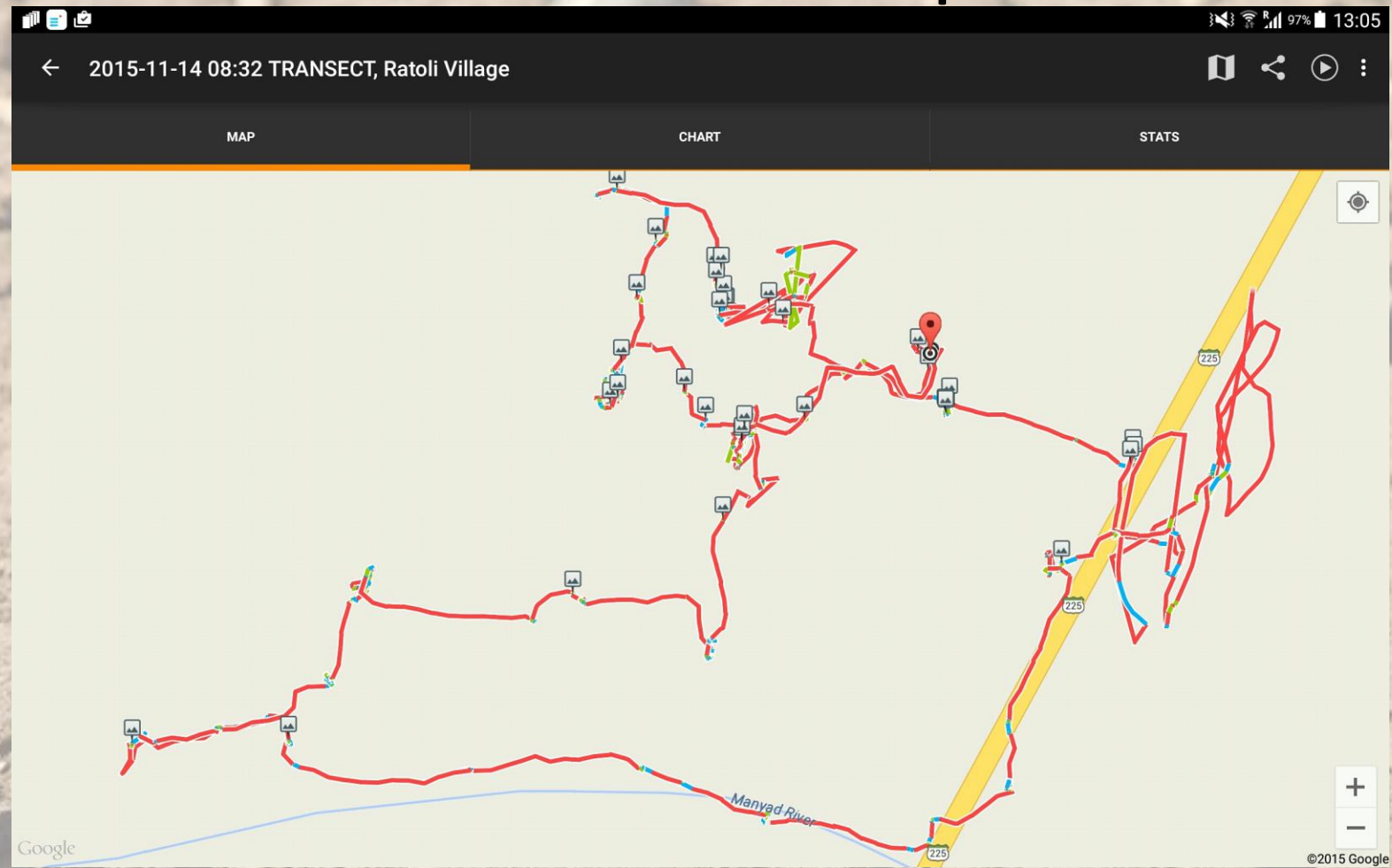
Parameter	Figures
Area	995.05 Hectares
No. of Households	675
Persons	3,249
Male: Females	1,710:1,539
Children Below 6	438
SC Population	740 (22.77%)
ST Population	211 (6.4%)
Literacy	64.09%
Total Workers	1,750
Marginal Workers	154
Agricultural Laborers	119



# TRANSECT WALK

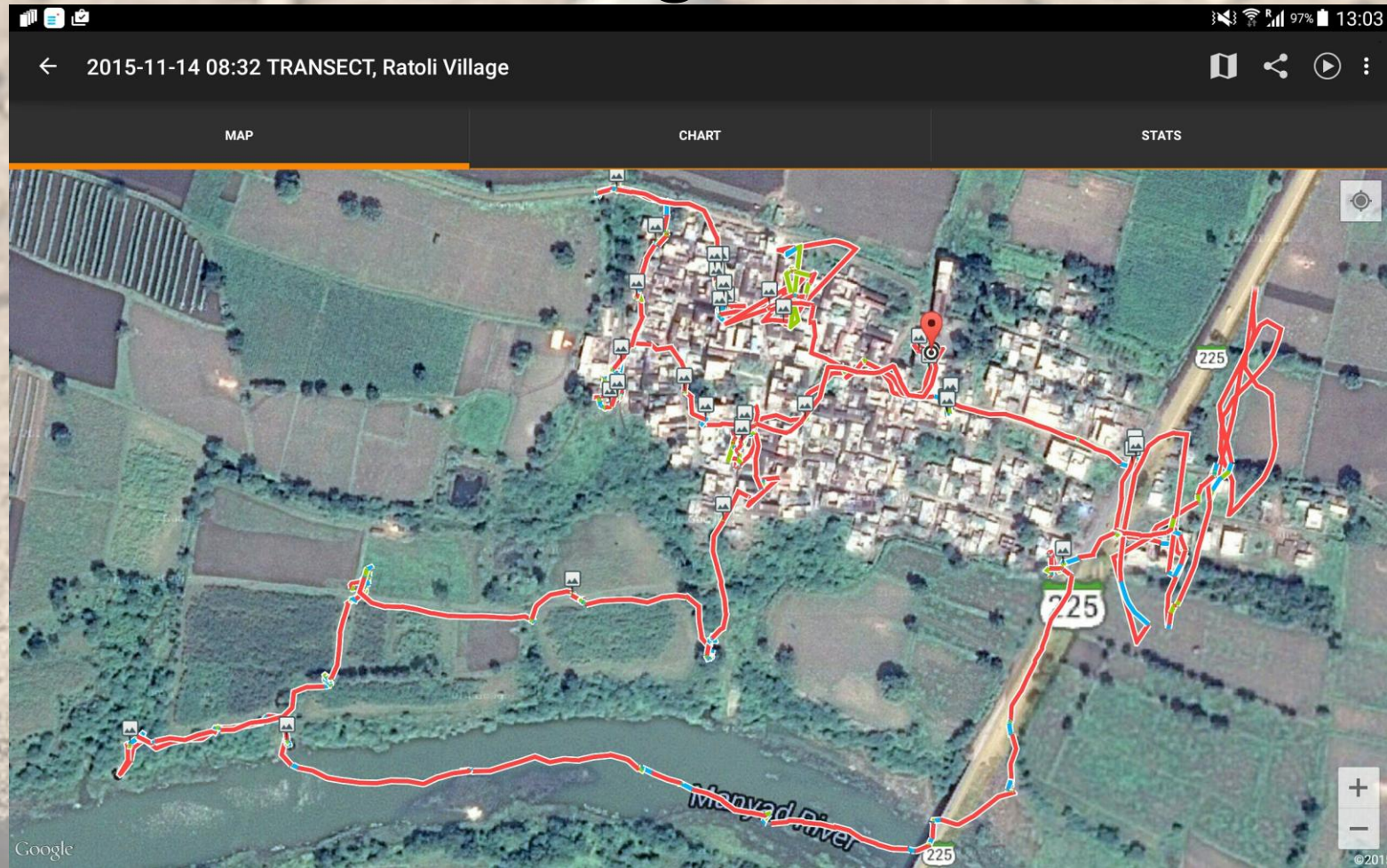


# Schematic Map



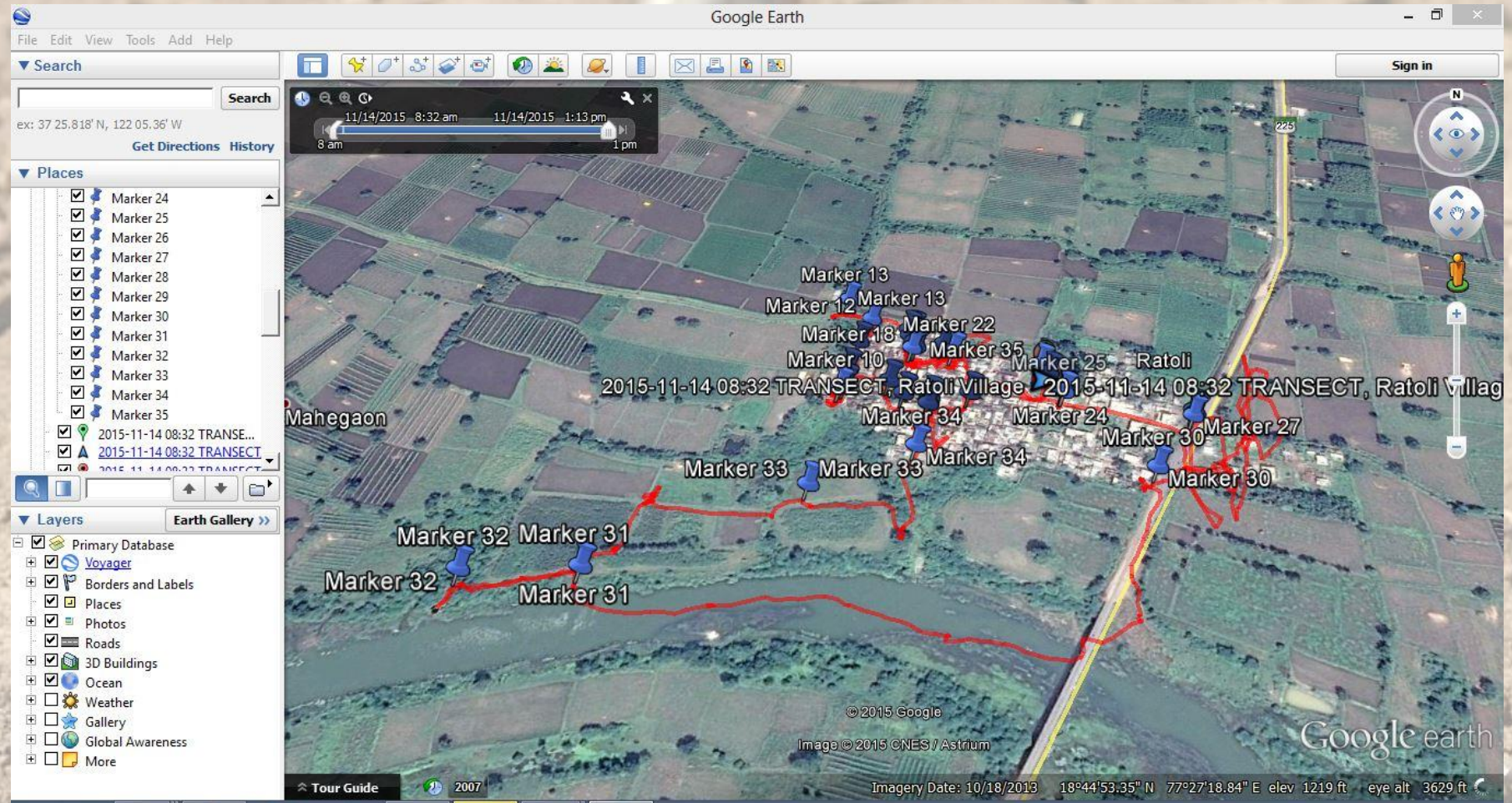


# Satellite image with streets





# Google earth screenshot





# Google earth animates!!



2015-11-14 08:32 TRANSECT, Ratoli Village.kmz

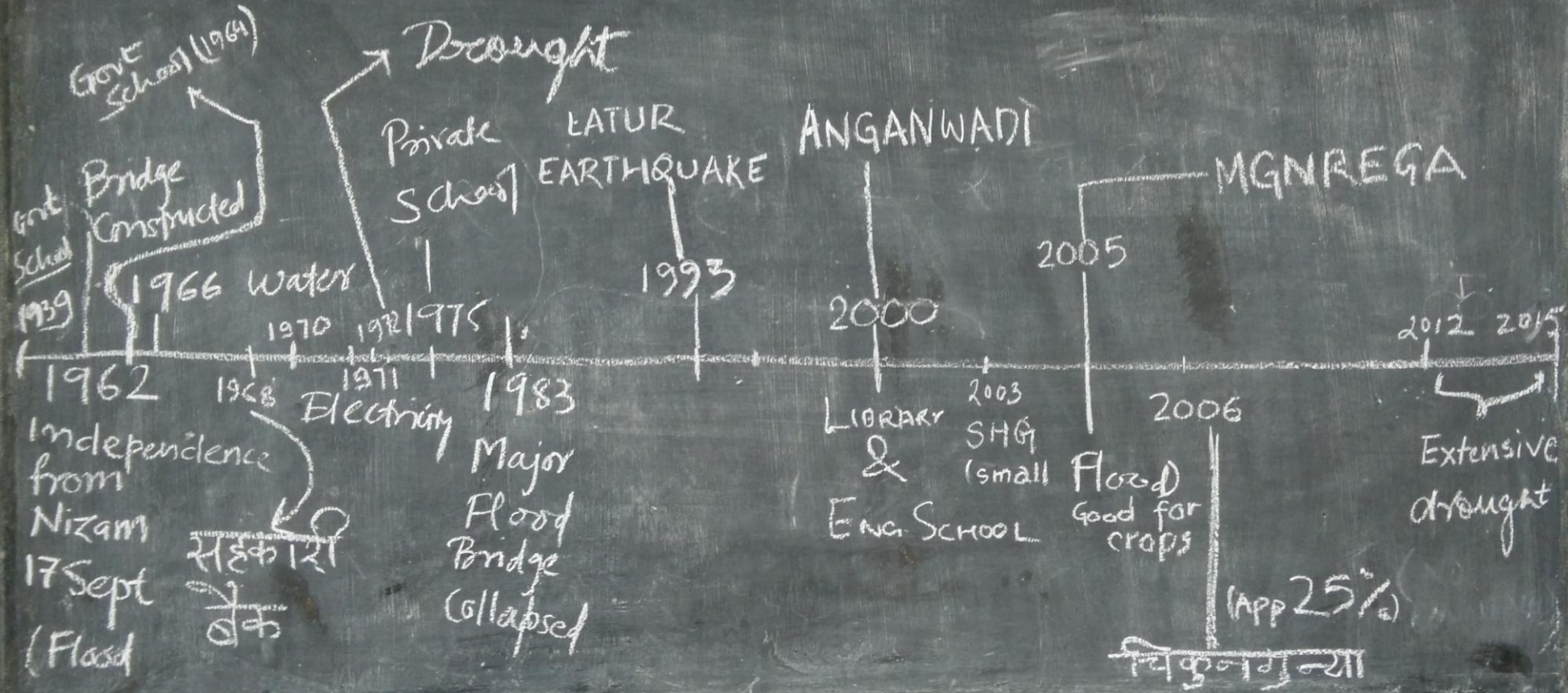


The background of the image is a close-up of parched, cracked soil. The cracks are irregular and deep, creating a textured, mosaic-like pattern. Scattered across the surface are small, light-colored pebbles and bits of dried plant matter. The lighting is bright, casting soft shadows that emphasize the dryness of the earth.

TIME LINE



# गावाचा संक्षिप्त इतिहास - 15-11-2015 - रातौळी





The background of the image is a close-up of parched, cracked soil. The soil is a light brown or tan color, and the cracks are deep and irregular, forming a network across the surface. Scattered throughout the soil are small, light-colored stones and bits of dried plant matter. The lighting is bright, casting soft shadows that emphasize the texture of the cracked earth.

**Resource map**







# “LEGENDS” in the resource map







Social map







# LEGENDS in the resource map





A group of five people are standing in a field of dense, low-lying plants with small yellow flowers. On the left, a young man in a dark green polo shirt and grey trousers stands with his hands in his pockets. Next to him are two young women; one wears a black and white patterned dress and a black headscarf, and the other wears a green dress, an orange headscarf, and orange leggings. To their right, two men in white shirts and dark trousers are looking towards the plants. The background shows a line of green trees under a clear sky. The text "Seasonality analysis" is overlaid in the center of the image.

Seasonality analysis



# CROPPING PATTERN



Groundnut  
Sunflower

FEB-MAY  
SUMMER



Tur  
Soyabean  
Cotton  
Jowar  
Til

JUNE-SEPT  
MONSOON



wheat  
Chana

OCT-JAN  
WINTER



# MIGRATION



Feb-MAY  
SUMMER

JUNE-SEPT  
MONSOON

OCT-JAN  
WINTER



# EMPLOYMENT



FEB-MAY  
SUMMER

JUNE-SEPT  
MONSOON

OCT-JAN  
WINTER



# FOOD GRAINS AVAILABILITY





# DISEASE



Feb-MAY  
SUMMER

JUNE-SEPT  
MONSOON

OCT-JAN  
WINTER





A group of men are sitting in a circle on the floor, engaged in a discussion. The word "RANKING" is overlaid in the center. The men are dressed in casual shirts, mostly light blue and white. The setting appears to be an indoor space with a plain wall in the background.

RANKING



# **Ranking Analysis – Problems and Reasons**

## **1. Water Stress**

- A. Low Rainfall in last 3 years**
- B. Lack of knowledge about water harvesting in agriculture**
- C. Low Awareness about water conservation in households in good season**
- D. Check dams not built**

## **2. Load Shedding**

- A. No governmental support for power generation**
- B. Non payment of Bills**
- C. Climate has become hotter year after year, so more demand**

## **3. Sanitation**

- A. Not enough water for in house toilets**
- B. Funds under TSC were not distributed**
- C. Open defecation by 15-20% population because in house toilets are dirty and not ventilated**
- D. Blocked Sewer lines and insects**



# **Ranking Analysis – Problems and Reasons conti...**

## **4. Encroachment of village land**

- A. Nobody to enforce rules**
- B. No-one wants to lose by following rules**
- C. Almost everyone has encroached common paths so no body raises any voice**

## **5. Youth Unemployment**

- A. Perceived cost of higher education**
- B. No guidance at village level**
- C. Few role models**
- D. Education in village at XI –XII level only in arts not in science**
- E. All exams require separate forms which adds to the cost of seeking jobs**

## **6. Girl Education**

- A. Mentality of people**
- B. Safety and Security concerns**



VENN diagram





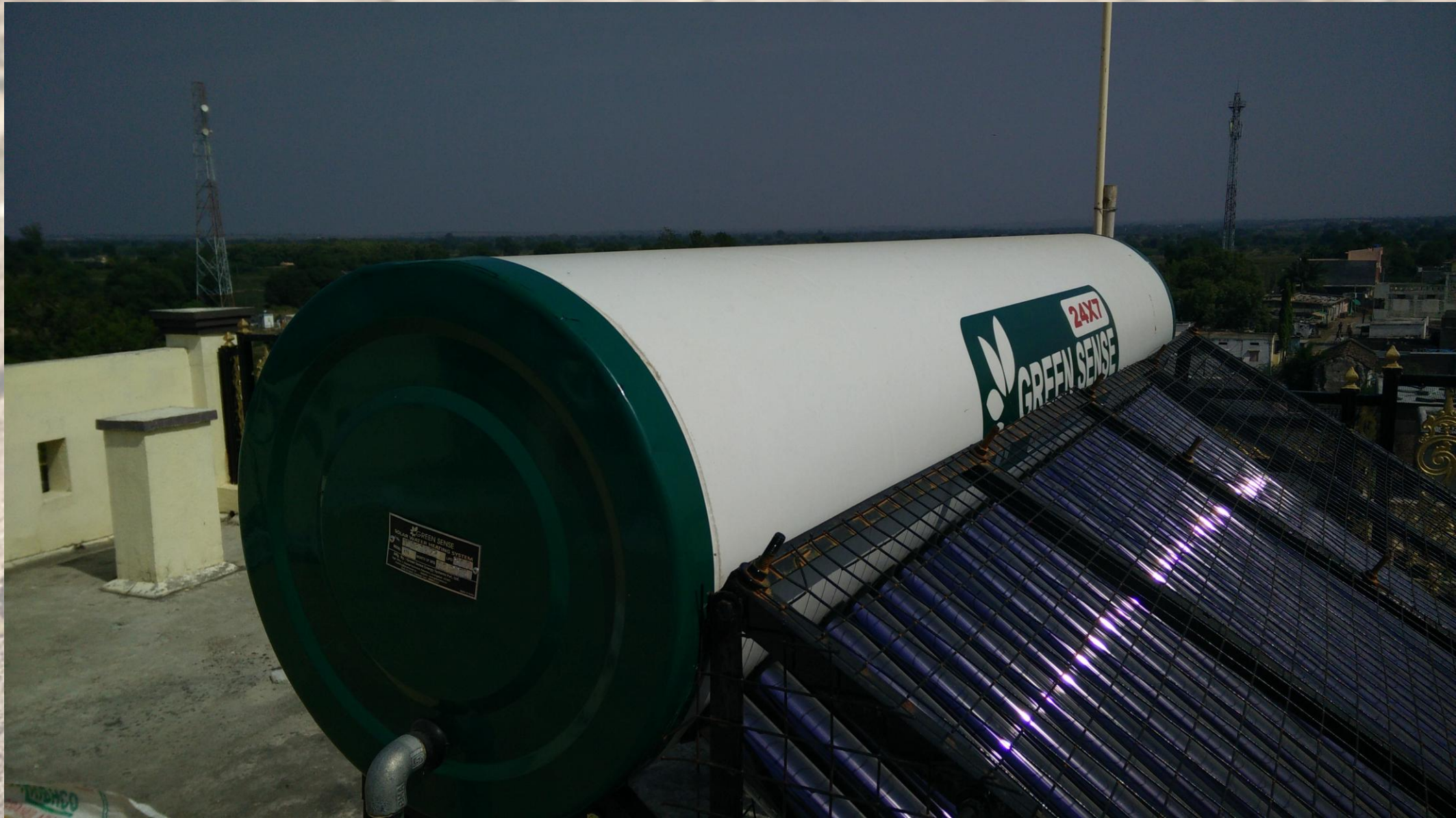






**Glimpses**













जिल्हा परिषद नांदेड  
भारत निर्माण कार्यक्रम अंतर्गत  
पाणी पुरवठा योजना  
मौ.रातोळी ता.नाथगाव जि.नांदेड  
सलोह जलकुंभ  
क्षमता-६०,००० लिटर











# Medical Store







Home  
made  
cake





Fortunately we discovered more wildlife than the trek





The background of the image is a close-up of parched, cracked soil. The soil is a light brown or tan color, and the cracks are deep and irregular, forming a network across the surface. Scattered throughout the soil are small, light-colored stones and bits of dried plant matter. The lighting is bright, casting soft shadows that emphasize the texture of the cracked earth.

THE paradox







# Recommendations

- **Village participatory approach**
- **Subsidization and funding for disposal pits, community toilets, credit for toilet construction**
- **NREGA only on paper**
- **Not much effective schemes for girls(except bachatgarh for pooling in funds)**
- **Drought contingency measures(enabling risk taking )**
- **Subsidization of tanking facilities.**
- **Orientation of youth w.r.t career opportunities**



# Thank you

